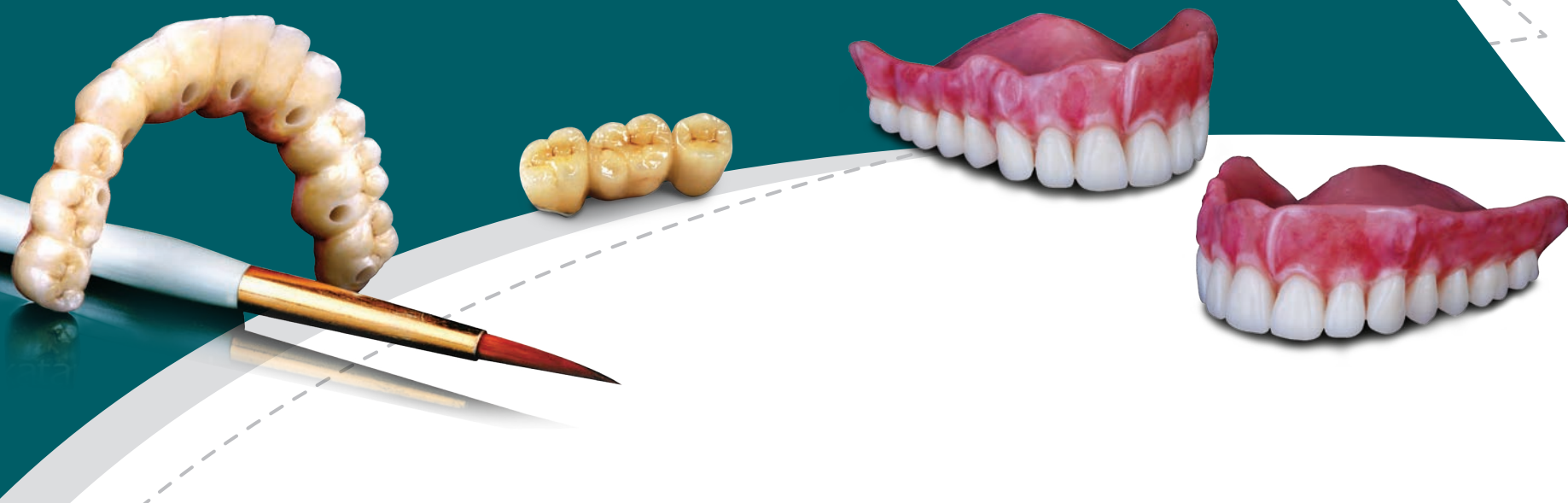


cžar®

A PERFECT COMBINATION OF
science & aesthetics

kataradental®
PUTS THE SMILE BACK ON®

www.kataradental.com



About Us ►

The organization's premier establishment, Dentech Laboratory, one of India's foremost Laboratories was set up at Bombay in 1985; by renowned Dental Surgeon, Dr Mukesh Katara. Dr Katara, a Postgraduate from the University Bombay undertook training in Dental laboratory Technology under Prof. Dr L. W. R. Kobes at the ZMK Klinik, Gottingen University in Germany; and subsequently worked at numerous private laboratories in Germany.

With this strong foundation and background, Dr Mukesh Katara established Dentech Laboratory as one of India's finest, best-equipped and staffed laboratories. Dentech now has staff of 60 qualified and dedicated personnel. In the year 1994, Katara Dental was founded in a 400 sq. meter premises in Pune. Katara Dental Pune's staff now has strengthened to 120 personnel, with an ultramodern facility specializing in innovative dental technology making it one of the premier dental laboratories in India. Making a pan-India presence, a third laboratory was set up at New Delhi in 2007.

It is the mission, purpose and objective of the organization to provide quality service and more than perfect dental restorations. We achieve this, by being consistent in quality and on-time delivery with special regards to the needs of the doctor and patient for whom we work. Our excellent customer relations have given Katara Dental the repute of being one of the leading dental laboratories in the country.

With State-of-the-art equipment, a full service and increased facility, we are able to meet a wide range of demands varying from small practitioners to large clinics serving the increasing needs of dentists and prosthodontists in various parts of India and elsewhere.

In addition to the staff and equipment, the essence of the organization lies in its commitments towards quality and impressive service. To accomplish this goal, each employee is equipped with efficient tools, quality materials and a safe and comfortable workplace. Eventually providing the quality and service that Puts the smile back on! – for patients and doctors alike.



A Katara Dental Innovation ►

CZAR is a one stop digital dentistry solution by Katara Dental. It encompasses various aspects of crown and bridge & Implant dentistry including work flow from Smile Designing to the surgical planning of Implant placement, provisionals, verification of impressions to the final restoration of choice delivered.



CZAR PFZ – Veneered Zirconia

Digitally designed zirconia framework veneered with feldspathic porcelain, ideal for restoration with a requirement of superlative aesthetics and strength.



Czar FZ and FZ plus

Czar FZ – Ideal tooth colour replacement in place of full metal crowns/ bridges in posteriors (high strength with translucency of 41%).

Czar FZ plus – Higher translucency of 49% - can be used for anterior and posterior crowns and anterior bridges upto 3 units.

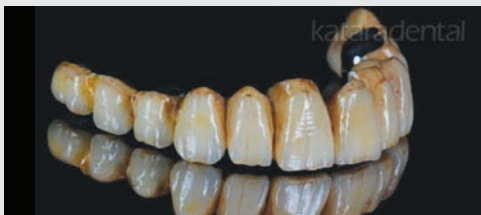


A Katara Dental Innovation ►



Czar FZ plus / MIYO

Milled from Multilayer Zirconia blanks for colour gradation and characterized using the MIYO Esthetic System.



CZAR PFM

Digitally designed restorations with cast / laser sintered NiCr / Ni Free CoCr copings, layered with feldspathic porcelain.



CZAR PFM Plus

CAD designed frame works precision milled from a solid block of Ni Free cobalt chrome or Titanium alloy. The possibilities include crown & bridges on natural teeth both cemented and screw retained Implant frames from a single tooth to multiple teeth of full arch restorations. CZAR PFM Plus ensure a precise and passive fit, so very essential for implants restorations.



CZAR MZ Hybrid

Metal–Zirconia Implant Fixed Hybrid Full-Arch Prosthesis.

Screw retained Hybrid design Zirconia full arch bridge. In this the Zirconia shell is bonded to a Ti /CoCr metal bar that connects to the implants on MU abutments. The Zirconia can be monolithic or partially layered

The Zirconia is well supported by the passive fit metal bar even in the cantilever areas reducing detrimental bending forces and thus minimizing material failure risks. There is also no risk of debonding as happens with Ti bases.



CZAR Ti Hybrid

CZAR Ti Hybrid is a CAD/CAM designed screw retained implant supported restoration.

The framework is precision milled from a solid block of Titanium on a 5 axis milling machine which results in a passive fit without any undue stress on the implants.

The milled metal frame is designed on the basis of an approved teeth set up and subsequently acrylicized using the premium Ivoclar teeth and Ivoclar Injection Pink Acrylic.

It is recommended to record the transfer of implant positions with the Open Try Impression technique using non-engaging open try transfer copings.



CZAR Ti Bar

CZAR Ti Bar is a Hader bar or Paris bar designed on CAD and precision milled in a 5axis metal milling machine from a solid block at Titanium resulting in an accurately fitting and passive biocompatible support for clip or attachment retained Denture.



A Katara Dental Innovation ►

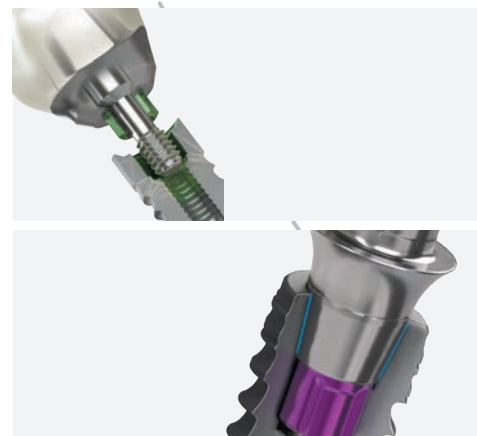


CZAR Custom Abutment

Stock abutment of various implant system do not always meet the specific requirements in terms of shape, size, angulation and emergence. In order to achieve the best possible result for the final restoration a customised abutment would give optimum results.

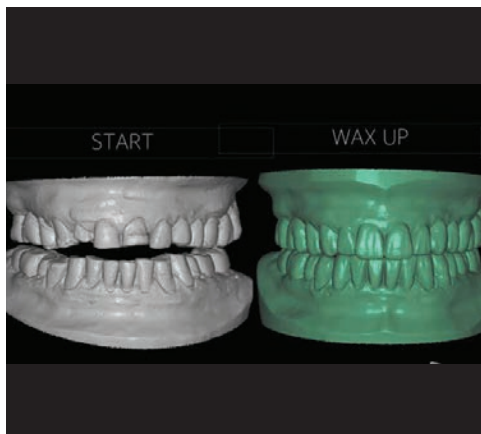
CZAR Custom Abutments are reverse engineered with the end result of the final restoration in mind.

The custom abutments can be milled in full titanium or in Zirconia with a titanium connection base.



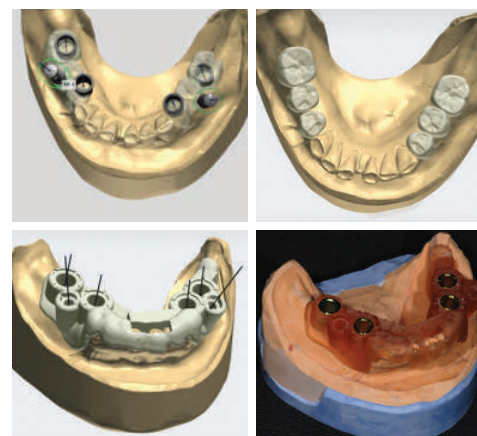
CZAR Authentic Connection for BioHorizons and Camlog

Custom abutments are milled from pre machined connection abutments from BioHorizons and Camlog to ensure the double advantage of custom design and the authentic connection from the implant company itself.



CZAR Smile Design / Mock up

- Digitally designed smiles on a pre op model / intra oral scan. The design can be sent to the clinician in the form of screenshots or files which can be viewed 3D on Exocad Webview app.
- The case is delivered as a 3D printed model which can be used to fabricate Test run Provisionals directly in the patient's mouth.



Surgical Guides for BioHorizons Implants

Designed by experienced Implantologists on 3Shape Implant Studio. This is an end-to-end solution built for guided surgery, merging surface scans (model or intra oral scan) and CBCT scans. Subsequent digital CAD design of the restoration follows by planning implant placement.

The planned CAD design is sent with a surgical report and the drilling protocol. On approval the guide is 3D printed and delivered. A provisional on a titanium base can be delivered with the guide.

- A tentative plan with Study models / Intra oral Scan and CBCT data is required.



Metal Free Restorations

- **Ivoclar's IPS e.max** Lithium Disilicate restorations Layered and Monolithic: The time-tested lithium disilicate C & B restoration layered with the Emax Ceram or custom stained respectively. Indicated for 3 units Anterior bridges (up 2nd premolar) and posterior crowns.
- **LAVA Premium** from 3M Espe: CAD designed Crown and Bridge / Implant restorations milled at LAVA milling centres and expertly layered with e.max Ceram or custom stained monolithic restorations.e.max Ceram or custom stained monolithic restorations.



Traditional PFM

Hand crafted or CAD designed ,casted in NiCr or CoCr alloys and layered expertly with Feldspathic porcelain.



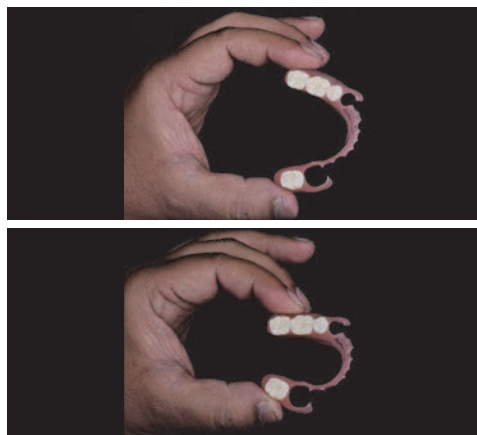
Full Metal Restorations

Hand crafted or CAD designed casted and polished Crowns, Bridges, Inlay/Onlays and Cast Posts.



Cast Partial Denture

The time tested removable cast frame digitally designed and fabricated using the GM380 alloy from Dentaaurum in combination with a European inspired style and design to deliver a light weight, durable casting that is functional and comfortable.



Flexible Partial

Flexible partial dentures are an excellent option for many partially edentulous patients. Flexible RPD denture materials are made from thermoplastics and are thinner than acrylics.

They are cosmetic, because they do not display a metal clasp, and comfortable because they are lightweight, and there is neither a metallic taste nor a rigid, bulky appliance in the mouth. Flexible partials have stress breaking function, making them friendlier and more forgiving to the teeth and tissues under normal use.



Complete Denture

We also specialize in acrylic complete dentures using Ivoclar's Ivocap injection moulding system and Ivoclar teeth sets. Optionally individually characterized, as above, using special resins.

Communication

Communication between the laboratory technician and the dental clinician has always been the key to obtaining a superior result in both the aesthetic and functional aspects of restorative dentistry. There needs to be an understanding between the clinician and technicians with respect to the type of restoration being planned and specific requirements about planning and the type of tooth preparation, margins or implant planning required to achieve the goal. Indications and limitations of each type of restoration need to be clearly understood and accepted by all including the patient.

The instructions to the technician need to be clear and precise and sent to the laboratory along with an accurately recorded Impression, antagonist model and jaw relation record.

The importance of shade communication can never be overemphasized. Use of shade guides with accompanying diagrams/photographs of individual characterization enhances the possibilities of proper blending of the restoration in the

patient's mouth. When selecting a shade, especially for translucent metal-free restorative options, it is essential to communicate the shade of the prepared stump.

Another essential, yet overlooked, part of this communication is the role of the diagnostic wax-up (whether it is done manually or digitally). The diagnostic wax-up, when used properly can provide valuable information to the dentist, technician and the patient. It may help dentist determine the amount of reduction necessary to achieve the final result, keeping preparation as conservative as possible.

Additionally, another important role of the diagnostic wax-up is in the fabrication of provisional restoration or temporaries. An impression of the wax-up is taken with a putty material. In the mouth, the temporaries can be contoured and customized to the patient's facial features. Occlusion and phonetics can also be evaluated; and when these along with aesthetics are deemed satisfactory.



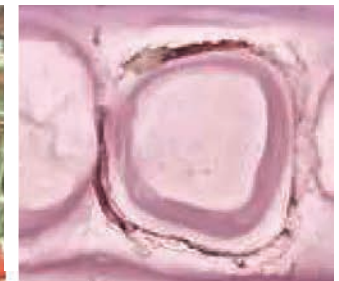
Quality Assurance

We guarantee at any time to use only high quality and proven materials for all steps of the processing starting from model making. We believe that providing an accurate and detailed plaster die stone model is often the most important step in constructing a high quality restoration. And then making dependable dies that fall perfectly back into place. These are accurately ditched by experienced hands, to ensure good fit and margins that are so important to the success.

Digital and Manual Waxups are done by experienced technicians after providing a spacer for luting agents, using appropriate anatomy libraries. Further processes involve 3D printing, casting and 5 axis Milling using the best available machines and materials. For cases that need to be casted, these are invested in investment materials that offer fine detail, smooth surface and controlled expansion to produce perfect castings. Ceramic and veneering materials that

are state of the art offering a wider choice in biocompatibility and aesthetics are used by artistic craftsmen.

Over the last 35 years, we have established a reputation of providing our dentists and patients with the highest quality products and services. We continually invest in new technology and equipment so that you receive nothing but the finest products.



kataradental®
PUTS THE SMILE BACK ON®

Head Office:

Apurva Complex, 56 Ganesh Khind Road,
Aundh, Pune - 411 007, India
Tel: +91 9607992951 / 2 / 3 / 4 | info@kataradental.com

New Delhi:

D-10/3, Okhla, Industrial Area, Phase - 1,
Ground Floor, New Delhi - 110 020, India
Tel: +91 11 46565800 / 40506993 | delhi@kataradental.com

dentechlaboratory®

5, Navroji Vakil Street, Nana Chowk,
Mumbai - 400 007, India
Tel: +91 22 2386 2723 / 2388 9764
Fax: +91 22 2387 0208 | dentech@kataradental.com

www.kataradental.com